

000.620 PD - 007 - BILL OF MATERIALS 3 LITE

ITEM NO.	DESCRIPTION	QUANTITY	PART NO.	FAB DWG. NO	SOURCE
1	FXD PNL TOP RAIL	2	10001102	10001102-F-01	A
2	STILE	4	10001102	10001102-F-01	A
3	BOTTOM RAIL	2	10001102	10001102-F-02	A
4	INTERLOCK	1	10001117	10001117-F-04	A
5	SCREW COVER	1	10001118	STRAIGHT CUT	A
6	GLAZING BEAD	8	10001111	10001111-F-01	A
7	STILE REINFORCEMENT - JAMB	2	10300150	STRAIGHT CUT	PPPP
8	STILE REINFORCEMENT - INTERLOCK	2	10300151	STRAIGHT CUT	PPPP
9	WEATHER-STRIPPING - .270 x .250	AS RECD	W21255MW	STRAIGHT CUT	HHHH
10	OPR PNL				
11	RAIL - TOP	1	10001102	10001102-F-01	A
12	STILE - INTERLOCK	1	10001102	10001102-F-03	A
13	STILE - LOCK	1	10001102	10001102-F-10	A
14	RAIL - BOTTOM	1	10001102	10001102-F-05	A
15	3 LITE ASTRAGAL	1	10001102	10001115-F-01	A
16	3 LITE KEEPER REINFORCEMENT	1	10001115	STRAIGHT CUT	A
17	3 LITE KEEPER REINFORCEMENT COVER	1	1* 2" x 1/16" ALUMINUM TUBE	STRAIGHT CUT	A
18	INTERLOCK	1	10005870	STRAIGHT CUT	METALS DEPOT
19	SCREW COVER	1	10001117	STRAIGHT CUT	A
20	GLAZING BEAD	1	10001118	10001117-F-02	A
21	STILE REINFORCEMENT - INTERLOCK	4	10001111	STRAIGHT CUT	A
22	STILE REINFORCEMENT - LOCK	1	10300151	10001111-F-01	A
23	RAIL REINFORCEMENT - BOTTOM	1	10300150	STRAIGHT CUT	PPPP
24	WEATHER-STRIPPING - .270 x .250	1	10300152	10300150-F-01	PPPP
25		AS RECD	W21255MW	10300152-F-01	PPPP
26	MISC				HHHH
27	LOCK SET ASSEMBLY - 2817 LOCK W/ TRIMPLATE	1	DECU-XXXX		F
28	HANDLE SET ASSEMBLY	1	DECU-XXX1		F
29	HANDLE SET - INTERIOR SWITCH		DECU-XXX2		F
30	HANDLE SET - INTERIOR SWITCH / KEY		DECU-XXX3		F
31	HANDLE SET - BLANK		1988PPRS166REVSS		F
32	ROLLER ASSEMBLY - PRECISION 1.96" WHEEL	2	D6096AMWKC 0.810		F
33	DRAFT PLUG - .810 DIA.	2	9946		HHHH
34	3/8" HOLE PLUG	2	DECU-2809-94		D
35	KEEPER - 2778 KEEPER - STAINLESS STEEL	1	011H055-D		F
36	IMPACT BRACKET	2			MMMM
37	1" INSULATED GLASS - NOTE <i>Refer to AS 10001115</i>	3			
38	SETTING BLOCKS (REFER TO SUPPLIER GUIDELINES)	AS RECD			
39	GLAZING COMPOUND	AS RECD			
40	SCREWS				
41	LOCK SET	2	#10 x 1.25" PFH - 410SS		
42	ROLLER ASSEMBLY	4	#9 x 3/4" PPH - 410SS		
43	REINFORCEMENT TO PANEL	AS RECD	#8 x 1" PFH - 410SS		
44	INTERLOCK	AS RECD	#8 x 5/8" PPH - 410SS		
45	KEEPER	4	#8 x 2" PPH - 410SS		
46	3 LITE KEEPER REINFORCEMENT	3	#8 x 1.25" PPH - 410SS		
47	IMPACT BRACKET	6	#8 x 2.5" PFH - PAINTED		

ELEMENT MATERIALS TECHNOLOGY
 1924 Premier Row
 Orlando, FL 32809

ESP NO. *ESP00914010-8*
 Date Verified: *4/25/12*

Verified By: *[Signature]*
 Deceuninck NORTH AMERICA

NOTE LAMINATED GLASS UTILIZES .090" SOLUTIA PVB

REV	DATE	DESCRIPTION	BY

CONFIDENTIAL
 UNPUBLISHED WORK © 2010
 DECEUNINCK NORTH AMERICA

MONROE, OH
 NAME: 000.620 PD - 007
 DWN BY: JGM
 CHD BY: JGM
 DWG NO: 000620PD-007

THIS DOCUMENT CONTAINS PROPRIETARY AND CONFIDENTIAL INFORMATION. DO NOT COPY OR DISCLOSE THIS INFORMATION WITHOUT THE EXPRESS WRITTEN CONSENT OF DECEUNINCK NORTH AMERICA. DECEUNINCK NORTH AMERICA RESERVES THE RIGHT TO CHANGE THIS DRAWING AND ANY ASSOCIATED DOCUMENTS.

P-8

623.000 PD - 004 - BILL OF MATERIALS 3 & 4 LITE

ITEM NO.	DESCRIPTION	QUANTITY	PART NO.	FAB DWG. NO	SOURCE
1	HEAD	1	10001100	10001100-F-01	A
2	JAMB	2	10001100	10001100-F-05	A
3	EXTERIOR FRAME COVER	2	10001104	10001104-F-01	A
4	INTERIOR FRAME COVER	4	10001104	STRAIGHT CUT	A
5	SILL	1	10001101	10001101-F-01	A
6	SILL THRESHOLD	1	10300171	10300171-F-01	PPPP
7	SILL RISER	2	10001105	10001105-F-01	A
8	WEATHER-STRIPPING - .270 x .250	AS REQ'D	W21255MW		HHHH
9	MISC				
10	SNUBBER	6	10300148	10300148-F-01	PPPP
11	ROLLER TRACK CAP	1	1A16719	STRAIGHT CUT	N
12	L - BRACKET	4	011H027		LLLL
13	SILL FRAME GASKET	2	G-A302-Z1-G600		CC
14	FRAME REINFORCEMENT	4	10300149	STRAIGHT CUT	PPPP
15	KEEPER	1			F
16	2778 KEEPER - YZD MILD STEEL				
17	2778 KEEPER - STAINLESS STEEL		DECU-2808-00		DDDD
18	T - BRACKET	1 OR 2	DECU-2808-84		MMMM
19	SCREEN KEEPER	1	10300213		
20	BUMPER STOP	2 OR 4	011H040		
21			2152.525		
22	SCREWS				
23	L - BRACKET - SASH	36	#8 x 1.25" PFH - 410SS		
24	L - BRACKET - HEAD	8	#8 x 1" PFH - 410SS		
25	L - BRACKET - HEAD	8	#8 x 0.75" PFH - 410SS		
26	SILL RISER	8	#8 x 2.5" PFH - 410SS		
27	FRAME ASSEMBLY	4	#8 x 1.25" PFH - 410SS		
28	SCREEN KEEPER	12	#8 x 2.5" PPH - 410SS		
29	T - BRACKET	2	#6 x .375" PPH		
30		8 OR 16	#8 x 2.5" PFH - 410SS		
31					

ELEMENT MATERIALS TECHNOLOGY
 1924 Premier Row
 Orlando, FL 32809

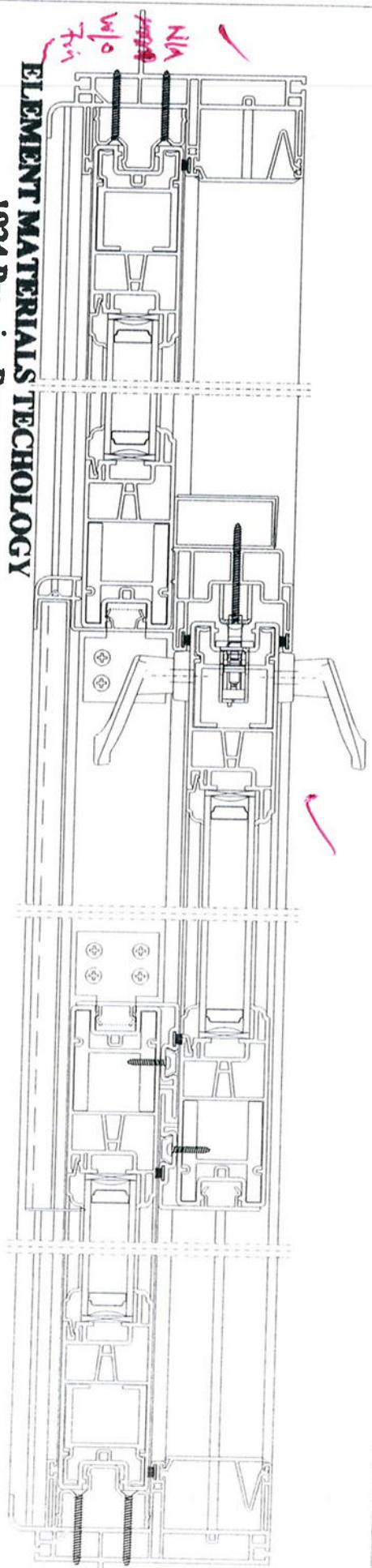
ESP NO. ESP09150058
 Date Verified: 4/20/10
 Verified By: [Signature]

REV	DATE	DESCRIPTION	BY

CONFIDENTIAL
 UNPUBLISHED WORK © 2010
 DECEUNINCK NORTH AMERICA

NAME: MONROE, OH	COPYRIGHT 2010
DWN BY: JGM	623.000 PD - 004
CHKD BY:	
DWG NO: 623000PD-004	

ASO MANUFACTURING, CHANGEST SMALL, BE
ASSEMBLED BY THE DESIGN ACTIVITIES



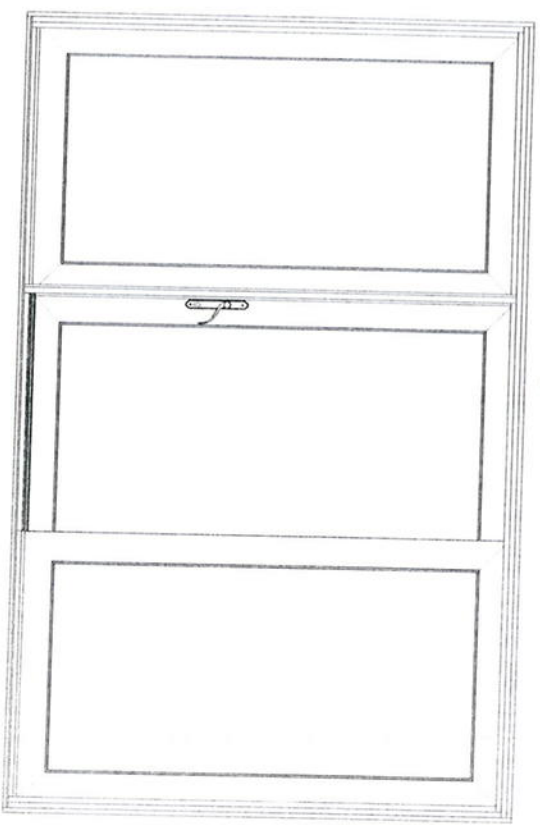
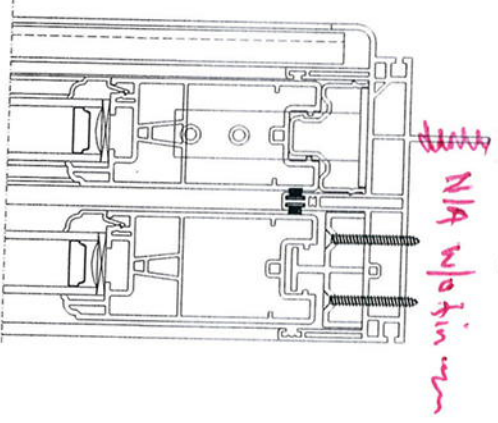
ELEMENT MATERIALS TECHNOLOGY

1924 Premier Row
Orlando, FL 32809

ESP NO. ESP0091160 P-8

Date Verified: 4/20/12

Verified By: _____



CONFIDENTIAL

DATE: 04/20/12
 TIME: 10:00 AM
 BY: [Signature]
 TITLE: [Title]

PROJECT: [Project Name]
 DRAWING NO.: 6254620 EQ - 004
 SHEET NO.: 01

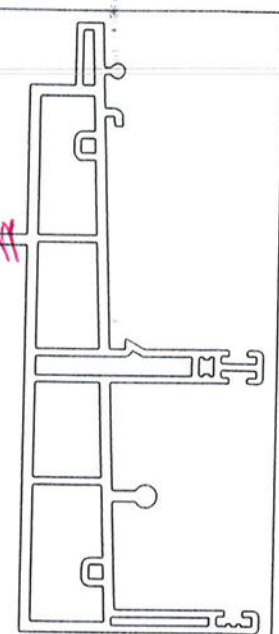
REVISIONS:

NO.	DATE	DESCRIPTION
1	04/20/12	ISSUED FOR CONSTRUCTION

APPROVED: [Signature]
 TITLE: [Title]

NOTES:
1. REFER TO DRAWING 6254620-001 FOR SPECIAL ORDER SECTION ONLY.

CAD MAINTAINED. CHANGES SHALL BE INCORPORATED BY THE DESIGN ACTIVITY.



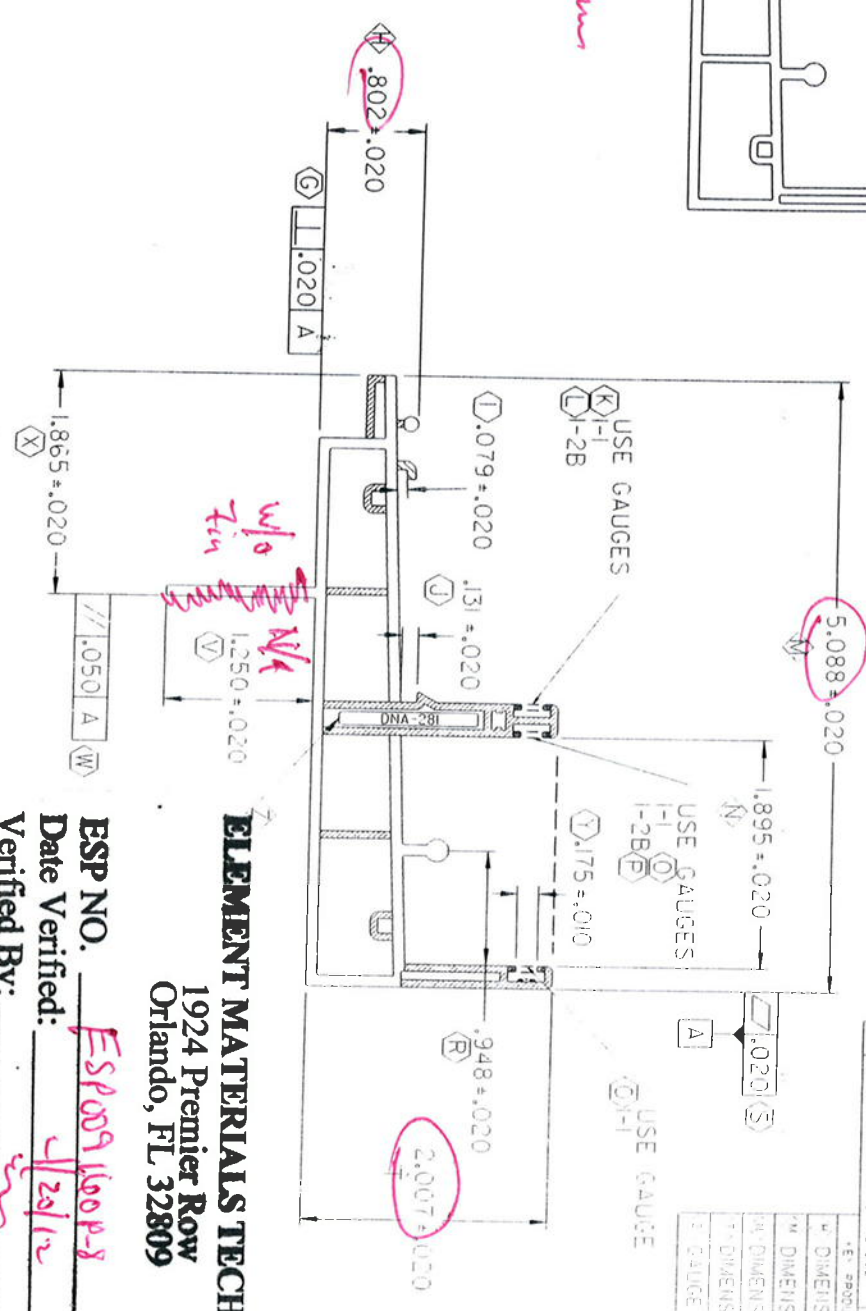
Handwritten: $\frac{1}{4}$ w/o Fin

WALL THICKNESS

.090 -	[White box]
.070 -	[Diagonal lines box]
.060 -	[Cross-hatch box]
.050 -	[Solid black box]
.040 -	[Solid black box]

NOTES:

1. ST000013' STRAIGHTNESS CLASS A AND LENGTH TOLERANCES APPLY (A)
2. INTERPRET ALL TOLERANCE APPLICATIONS PER ST000013 (B)
3. UNSPECIFIED EXTERNAL RADI = .XXX +.010 / -.005 (C)
4. UNSPECIFIED INTERNAL RADI = .XXX +.020 / -.005 (D)
5. UNSPECIFIED EXTERNAL WALL THICKNESS = .XXX +/- .10% (E)
6. UNSPECIFIED INTERNAL WALL THICKNESS = .XXX +/- .20% (F)



REV	DESCRIPTION	DATE	BY
1	CHANGED DATUM 2 TO THE EDGE	03.13.12	SPRINT
2		05.15.12	RMB

REV	DESCRIPTION	DATE	BY
1	EX. 3900127 Characteristic		
2	DIMENSION 5.088 = 5.11		
3	DIMENSION 1.895 = 1.90		
4	DIMENSION 1.865 = 1.87		
5	DIMENSION 1.865 = 1.87		
6	DIMENSION 1.865 = 1.87		
7	DIMENSION 1.865 = 1.87		
8	DIMENSION 1.865 = 1.87		
9	DIMENSION 1.865 = 1.87		
10	DIMENSION 1.865 = 1.87		
11	DIMENSION 1.865 = 1.87		
12	DIMENSION 1.865 = 1.87		
13	DIMENSION 1.865 = 1.87		
14	DIMENSION 1.865 = 1.87		
15	DIMENSION 1.865 = 1.87		
16	DIMENSION 1.865 = 1.87		
17	DIMENSION 1.865 = 1.87		
18	DIMENSION 1.865 = 1.87		
19	DIMENSION 1.865 = 1.87		
20	DIMENSION 1.865 = 1.87		
21	DIMENSION 1.865 = 1.87		
22	DIMENSION 1.865 = 1.87		
23	DIMENSION 1.865 = 1.87		
24	DIMENSION 1.865 = 1.87		
25	DIMENSION 1.865 = 1.87		
26	DIMENSION 1.865 = 1.87		
27	DIMENSION 1.865 = 1.87		
28	DIMENSION 1.865 = 1.87		
29	DIMENSION 1.865 = 1.87		
30	DIMENSION 1.865 = 1.87		
31	DIMENSION 1.865 = 1.87		
32	DIMENSION 1.865 = 1.87		
33	DIMENSION 1.865 = 1.87		
34	DIMENSION 1.865 = 1.87		
35	DIMENSION 1.865 = 1.87		
36	DIMENSION 1.865 = 1.87		
37	DIMENSION 1.865 = 1.87		
38	DIMENSION 1.865 = 1.87		
39	DIMENSION 1.865 = 1.87		
40	DIMENSION 1.865 = 1.87		
41	DIMENSION 1.865 = 1.87		
42	DIMENSION 1.865 = 1.87		
43	DIMENSION 1.865 = 1.87		
44	DIMENSION 1.865 = 1.87		
45	DIMENSION 1.865 = 1.87		
46	DIMENSION 1.865 = 1.87		
47	DIMENSION 1.865 = 1.87		
48	DIMENSION 1.865 = 1.87		
49	DIMENSION 1.865 = 1.87		
50	DIMENSION 1.865 = 1.87		
51	DIMENSION 1.865 = 1.87		
52	DIMENSION 1.865 = 1.87		
53	DIMENSION 1.865 = 1.87		
54	DIMENSION 1.865 = 1.87		
55	DIMENSION 1.865 = 1.87		
56	DIMENSION 1.865 = 1.87		
57	DIMENSION 1.865 = 1.87		
58	DIMENSION 1.865 = 1.87		
59	DIMENSION 1.865 = 1.87		
60	DIMENSION 1.865 = 1.87		
61	DIMENSION 1.865 = 1.87		
62	DIMENSION 1.865 = 1.87		
63	DIMENSION 1.865 = 1.87		
64	DIMENSION 1.865 = 1.87		
65	DIMENSION 1.865 = 1.87		
66	DIMENSION 1.865 = 1.87		
67	DIMENSION 1.865 = 1.87		
68	DIMENSION 1.865 = 1.87		
69	DIMENSION 1.865 = 1.87		
70	DIMENSION 1.865 = 1.87		
71	DIMENSION 1.865 = 1.87		
72	DIMENSION 1.865 = 1.87		
73	DIMENSION 1.865 = 1.87		
74	DIMENSION 1.865 = 1.87		
75	DIMENSION 1.865 = 1.87		
76	DIMENSION 1.865 = 1.87		
77	DIMENSION 1.865 = 1.87		
78	DIMENSION 1.865 = 1.87		
79	DIMENSION 1.865 = 1.87		
80	DIMENSION 1.865 = 1.87		
81	DIMENSION 1.865 = 1.87		
82	DIMENSION 1.865 = 1.87		
83	DIMENSION 1.865 = 1.87		
84	DIMENSION 1.865 = 1.87		
85	DIMENSION 1.865 = 1.87		
86	DIMENSION 1.865 = 1.87		
87	DIMENSION 1.865 = 1.87		
88	DIMENSION 1.865 = 1.87		
89	DIMENSION 1.865 = 1.87		
90	DIMENSION 1.865 = 1.87		
91	DIMENSION 1.865 = 1.87		
92	DIMENSION 1.865 = 1.87		
93	DIMENSION 1.865 = 1.87		
94	DIMENSION 1.865 = 1.87		
95	DIMENSION 1.865 = 1.87		
96	DIMENSION 1.865 = 1.87		
97	DIMENSION 1.865 = 1.87		
98	DIMENSION 1.865 = 1.87		
99	DIMENSION 1.865 = 1.87		
100	DIMENSION 1.865 = 1.87		

ELEMENT MATERIALS TECHNOLOGY
 1924 Premier Row
 Orlando, FL 32809

ESP NO. ESP0091600P8
 Date Verified: 4/29/12
 Verified By: _____

CONFIDENTIAL

UNPUBLISHED WORK © 2011
 DECEUNINCK NORTH AMERICA

UNLESS OTHERWISE SPECIFIED
 DIM ARE IN INCHES
 2 PL. ± 0.005 3 PL. ± 0.005*
 INTERPRET DIM AND TOL. PER
 ASME Y14.5M - 1994

THIRD ANGLE PROJECTION

THIS DOCUMENT CONTAINS PROPRIETARY AND CONFIDENTIAL INFORMATION. IT IS THE PROPERTY OF DECEUNINCK NORTH AMERICA. NO PART OF THIS DOCUMENT IS TO BE REPRODUCED OR DISCLOSED WITHOUT THE EXPRESS WRITTEN CONSENT OF DECEUNINCK NORTH AMERICA. DECEUNINCK NORTH AMERICA RESERVES THE RIGHT TO CHANGE THIS DRAWING AND ANY ASSOCIATED DOCUMENTS.

DESIGN BY:	RJC
DATE:	00/10/20
DRAWN BY:	RJC
DATE:	00/10/20
ADTH:	DATE:
ADTH:	DATE:
FILENAME:	DATE:

SCALE: 1:1

deceuninck
 NORTH AMERICA

SILL FRAME PE

CAD MAINTAINED. CHANGES SHALL BE INCORPORATED BY THE DESIGN ACTIVITY.

ELEMENT MATERIALS TECHNOLOGY

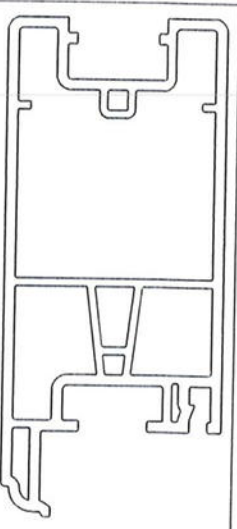
1924 Premier Row
Orlando, FL 32809

ESP NO. ESP0091600-P-8

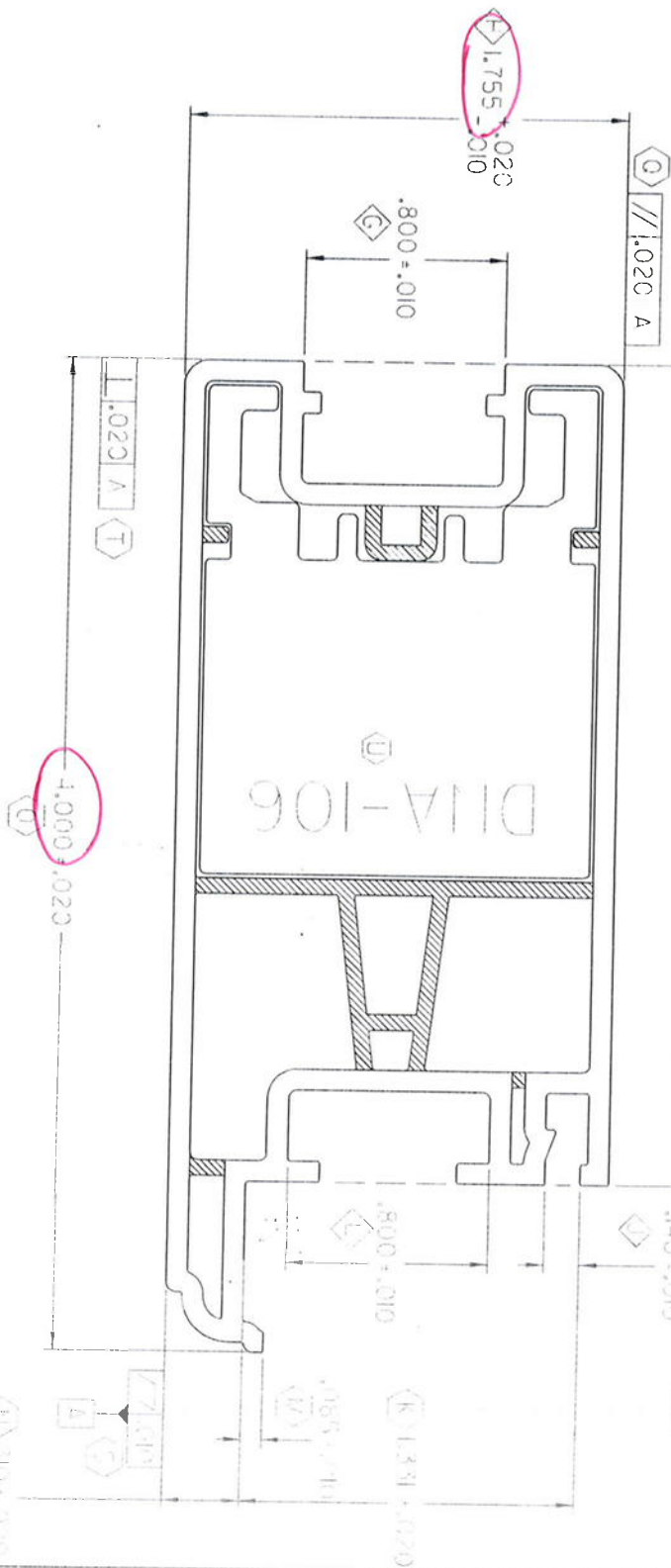
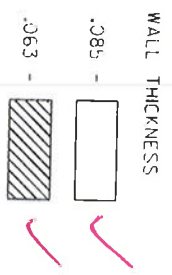
Date Verified: 1/22/16

Verified By: [Signature]

SCALE 1:1



KEY PRODUCT CHARACTERISTICS	
G	DIMENSION .790 - .810
H	DIMENSION 1.745 - 1.775
I	DIMENSION 3.292 - 3.332
J	DIMENSION .150 - .150
L	DIMENSION .790 - .810



- NOTES:
1. 'STD00013' STRAIGHTNESS CLASS B AND LENGTH TOLERANCES APPLY (A)
 2. INTERPRET ALL TOLERANCE APPLICATIONS PER STD00013 (B)
 3. UNSPECIFIED EXTERNAL RADIUS = .XXX +.010 / -.005 (C)
 4. UNSPECIFIED INTERNAL RADIUS = .XXX +.020 / -.005 (D)
 5. UNSPECIFIED EXTERNAL WALL THICKNESS = .XXX +/- .10% (E)
 6. UNSPECIFIED INTERNAL WALL THICKNESS = .XXX +/- .20% (F)

CONFIDENTIAL
UNPUBLISHED WORK © 2008
DECEUNINCK NORTH AMERICA

UNLESS OTHERWISE SPECIFIED
DIM ARE IN INCHES
TOL. DIM ANGLES: 1°
2° 30' 0.001' 3° 30' 0.005'
INTERPRET DIV AND TOL PER
ASME Y14.5M - 1994

DESIGN BY	DATE	SAO
TRAVIN M	11/06/11	SAO
DATE:	11/06/11	SAO
DATE:	11/06/11	SAO
DATE:	11/06/11	SAO

deceuninck an element materials company

MAIN SASP - 00

DATE: 11/06/11

SCALE: 1:1



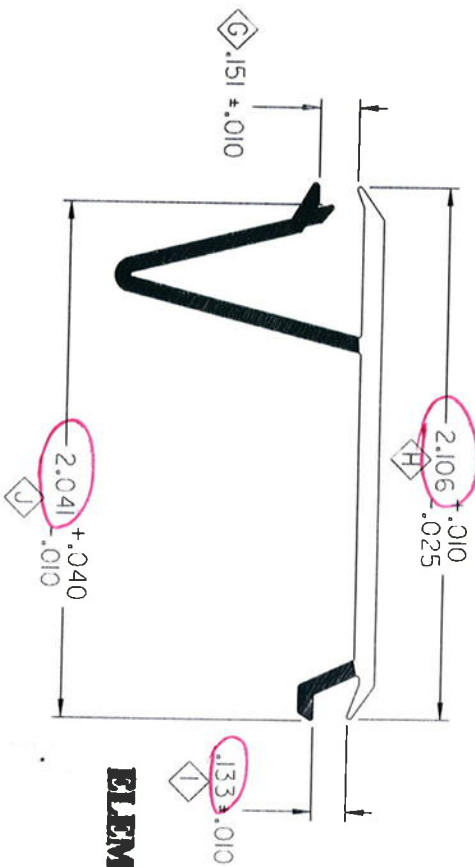
SCALE 1:1

CAD MAINTAINED. CHANGES SHALL BE INCORPORATED BY THE DESIGN ACTIVITY.

REVISION HISTORY			
REV	DESCRIPTION	DATE	APPROVED
D	*SAC	10/08/25	BMB

KEY PRODUCT CHARACTERISTICS

G	DIMENSION .141 - .161
H	DIMENSION 2.081 - 2.116
I	DIMENSION .123 - .143
J	DIMENSION 2.031 - 2.081



ELEMENT MATERIALS TECHNOLOGY
 1924 Premier Row
 Orlando, FL 32809

ESP NO. ES80091608-8
 Date Verified: 1/20/12
 Verified By: [Signature]



- NOTES:
1. ST000013' STRAIGHTNESS CLASS E AND LENGTH TOLERANCES APPLY (A)
 2. INTERPRET ALL TOLERANCE APPLICATIONS PER ST00013' (B)
 3. UNSPECIFIED EXTERNAL RADI = .XXX +.020 / -.005 (D)
 4. UNSPECIFIED EXTERNAL WALL THICKNESS = .XXX +/- .10/(E)
 5. UNSPECIFIED INTERNAL RADI = .XXX +.020 / -.005 (D)
 6. UNSPECIFIED INTERNAL WALL THICKNESS = .XXX +/- .20/(E)

CONFIDENTIAL
 UNPUBLISHED WORK © 2010
 DECEUNINCK NORTH AMERICA

THIS DOCUMENT CONTAINS PROPRIETARY AND CONFIDENTIAL INFORMATION. DO NOT COPY OR DISSEMINATE THIS INFORMATION WITHOUT THE EXPRESS WRITTEN PERMISSION OF DECEUNINCK NORTH AMERICA. DECEUNINCK NORTH AMERICA RESERVES THE RIGHT TO CHANGE THIS DRAWING AND ANY ASSOCIATED DOCUMENTS.

UNLESS OTHERWISE SPECIFIED
 DIM ARE IN INCHES
 2 PL: .010° 3 PL: .005°
 INTERPRET DIM AND TOL PER
 ASME Y14.5M - 1994

THIRD ANGLE PROJECTION

DESIGN BY:	CTC
DATE:	05/11/14
DRAWN BY:	CTC
DATE:	05/11/14
AUTH:	DATE:
DATE:	DATE:
DATE:	DATE:
DATE:	DATE:
DATE:	DATE:

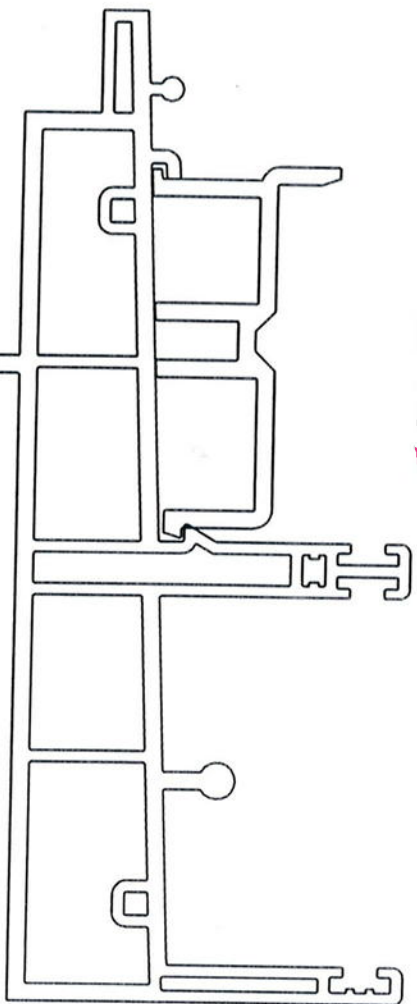
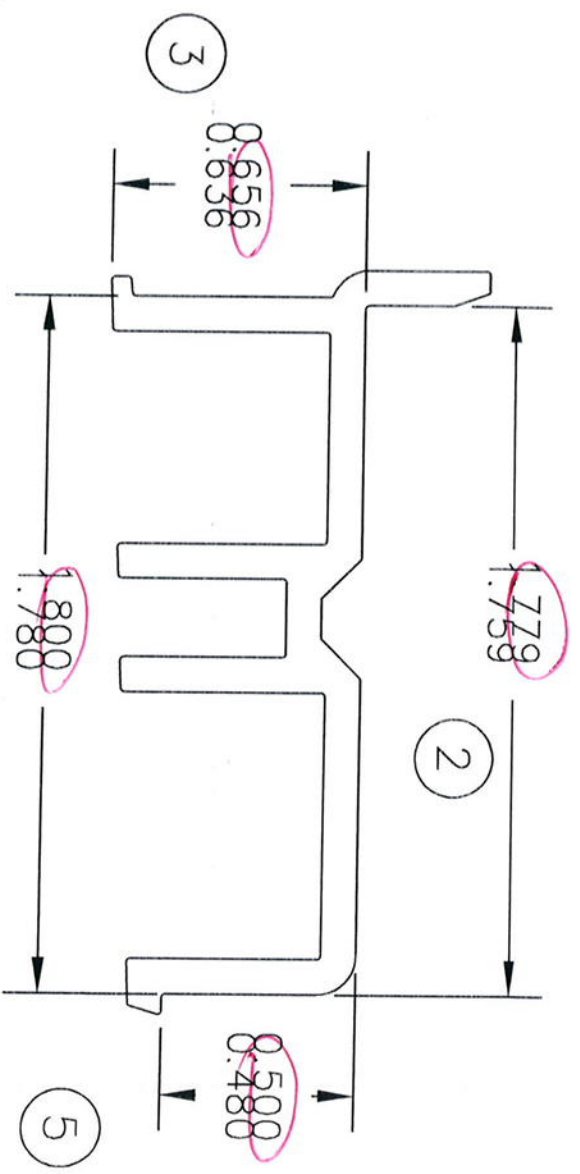
NAME: **deceuninck** 31 NORTH GARDNER ROAD
 NORTH AMERICA ANN ARBOR, MI 48106

FRAME ADAPTOR

SIZE DWG. NO: 1000104.SH
 SCALE: 2:1
 SHEETS: 10-1

① WALL THICKNESS
0.100 ✓
0.080

⑥ CHECK SNAP IN PART 1101 ✓



ELEMENT MATERIALS TECHNOLOGY
1924 Premier Row
Orlando, FL 32809

ESP NO. ESP0091602-S
Date Verified: 4/22/12
Verified By: [Signature]

Deceuninck® NORTH AMERICA/Oakland N.J.

AREA= _____
TOTAL WEIGHT= _____
TOL: ± 0.010

FILENAME: _____
path _____

BY DATE MATL SCALE
CTC 11/14/05 PVC 2:1



SILL INSERT

REV	BY	APPVD	DATE	CHANGE

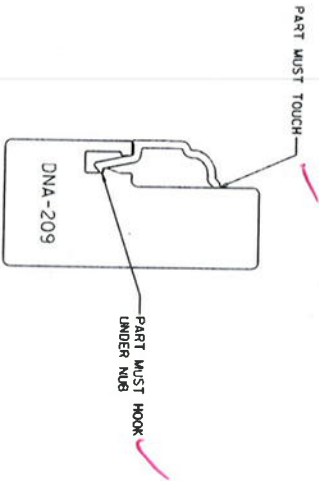
10001105_SH



ELEMENT MATERIALS TECHNOLOGY CAD MAINTAINED. CHANGES SHALL BE
 1924 Premier Row ORATED BY THE DESIGN ACTIVITY.
 Orlando, FL 32809

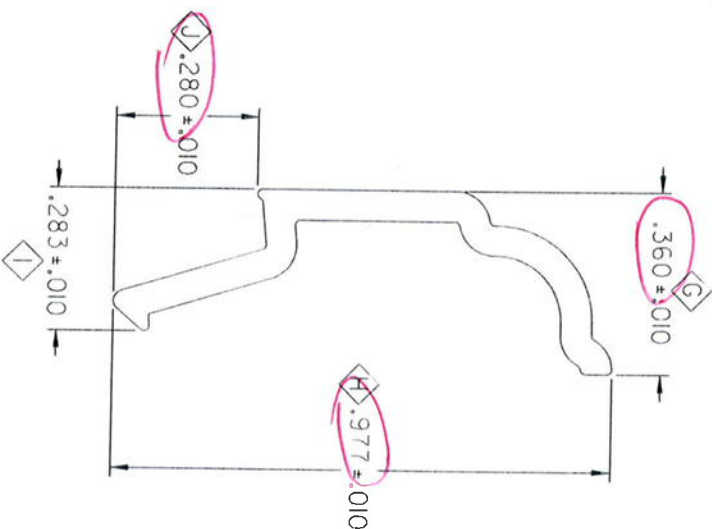
SCALE 1:1

ESP NO. ESP10091600P-8
 Date Verified: 4/25/12
 Verified By: [Signature]



SLIDE PART INTO GAUGE FROM THE END. PART WILL NOT SNAP INTO GAUGE

WALL THICKNESS
 .060 -



USE MYLAR 1000III.OP REV D

- NOTES:
1. STIDD0003' STRAIGHTNESS CLASS A AND LENGTH TOLERANCES APPLY (A)
 2. INTERPRET ALL TOLERANCE APPLICATIONS PER STIDD0003(B)
 3. UNSPECIFIED EXTERNAL RADI = .xxx +.010 / -.005 (C)
 4. UNSPECIFIED EXTERNAL RADI = .xxx +.020 / -.005 (D)
 5. UNSPECIFIED INTERNAL WALL THICKNESS = .xxx +/- .10% (E)
 6. UNSPECIFIED INTERNAL WALL THICKNESS = .xxx +/- .20% (E)

CONFIDENTIAL
 UNPUBLISHED WORK © 2010
 DECEUNINCK NORTH AMERICA

UNLESS OTHERWISE SPECIFIED
 DIM ARE IN INCHES
 2 PL. ON ANGLES • P
 INTERPRET DIM AND TOL PER
 ASME Y14.5M - 1994

DESIGN BY:		MC	
DATE:	00/12/01	DATE:	00/12/01
DRAWN BY:	MC	DATE:	00/12/01
DATE:	00/12/01	DATE:	00/12/01
ADTH:		DATE:	
FILENAME:	10534H	DATE:	

NAME: **deceuninck** NORTH AMERICA
 501 NORTH GARDNER ROAD
 MONROE, LA 70009

SIZE/DWG. NO: 1000III.OP
 SCALE: 4:1
 SHEET: 049



REV: E

REV	DESCRIPTION	DATE	APPROVED
E	CHANGED MYLAR	02/17/09	BMG

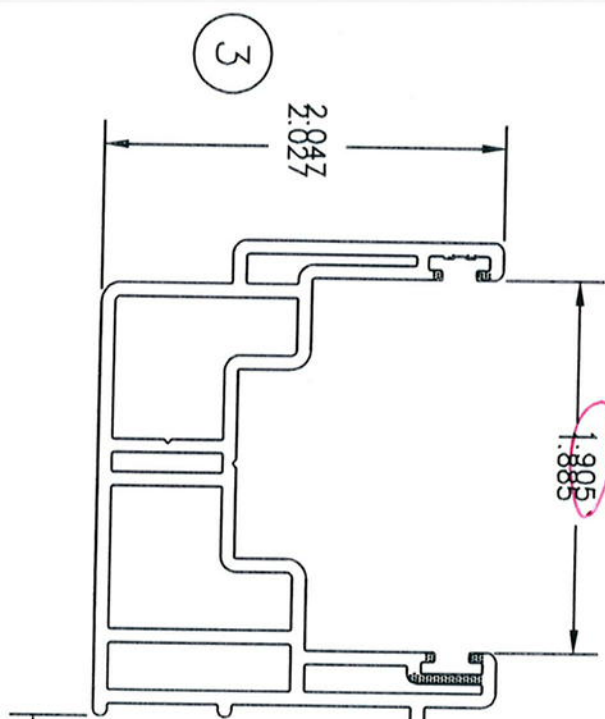
KEY	PRODUCT CHARACTERISTICS
G	GAUGE DNA-209
H	GAUGE DNA-209
I	GAUGE DNA-209
J	GAUGE DNA-209

1

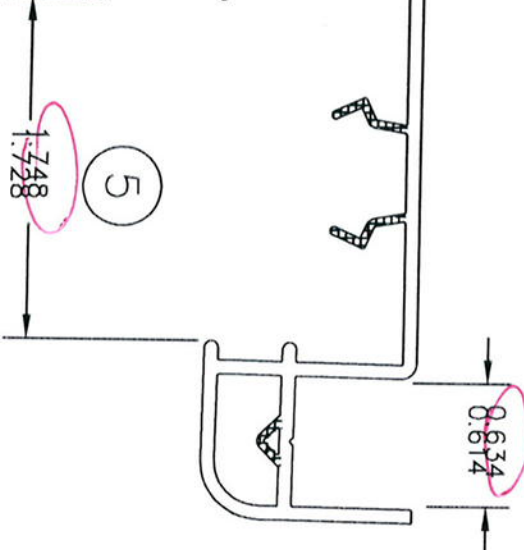
WALL THICKNESS

-  0.080
-  0.060
-  0.050
-  0.040

2

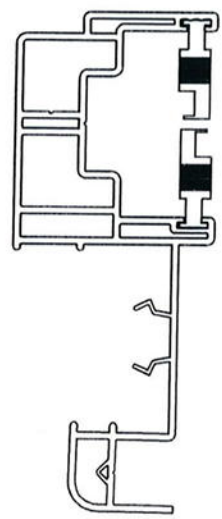


4



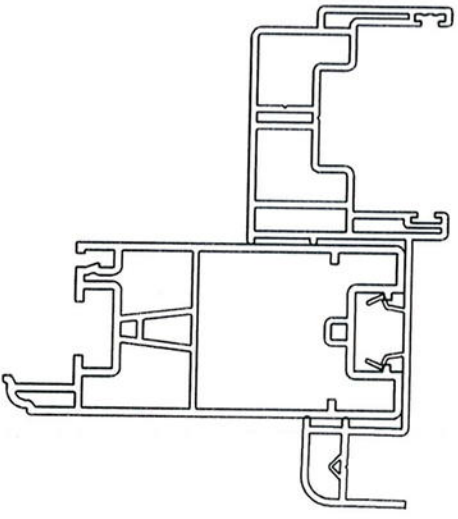
6

CHECK WITH GAUGE S-3



7

CHECK SNAP IN APPROVED PART 10001102.



ELEMENT MATERIALS TECHNOLOGY

1924 Premier Row
Orlando, FL 32809

ESP NO. ESP009160P-8
Date Verified: 11/20/12
Verified By: [Signature]



Deceuninck®
NORTH AMERICA/Oakland N.J.

AREA=
TOTAL WEIGHT= .874
TOL: ±0.010

FILENAME:
path

BY	DATE	MATL	SCALE
CTC	11/14/05	PVC	1:1

3-LITE JAMB

REV	BY	APPVD	DATE	CHANGE

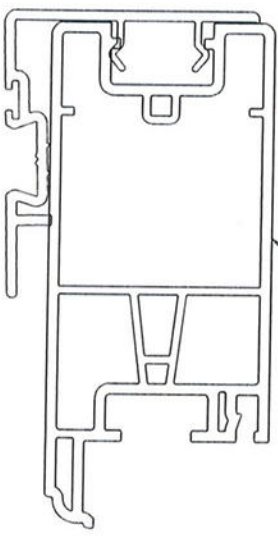
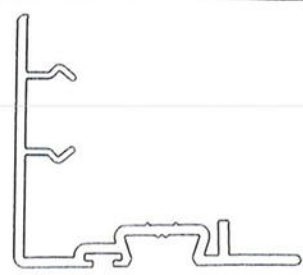
10001115

ELEMENT **DIAGNOSTICS TECHNOLOGY** **CHANGES SHALL BE MAINTAINED THE DESIGN ACTIVITY.**

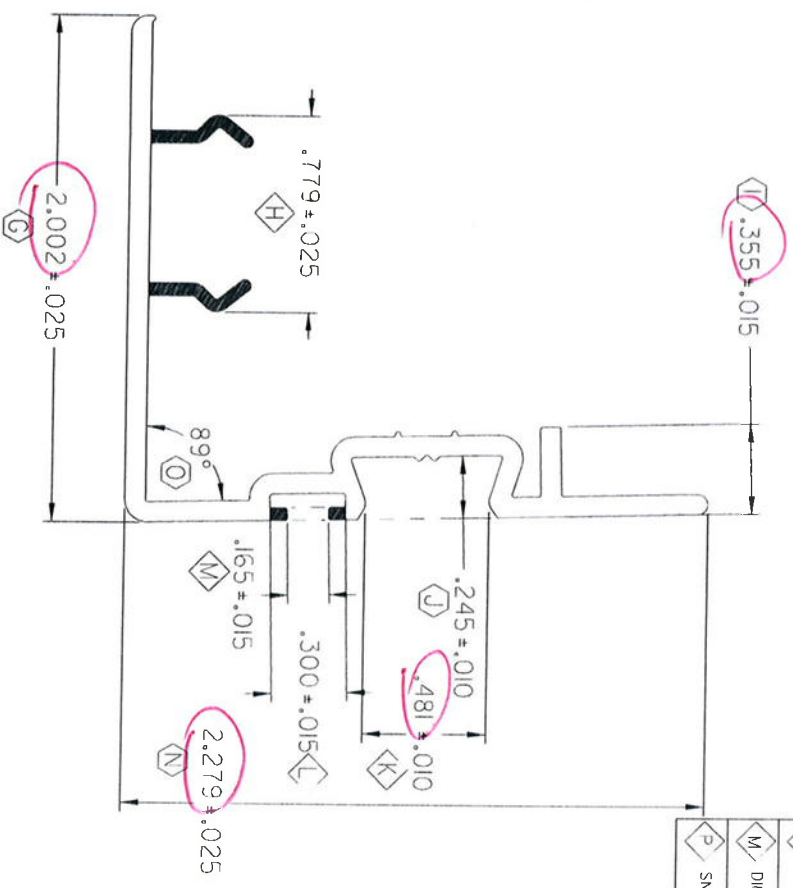
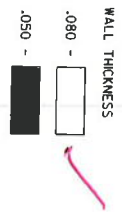
1924 **Adaptier Row**
Orlando, FL 32809

ESP NO. ESP081001-8
Date Verified: 4/20/12
Verified By: mm/Albelle

SCALE 1:1



CHECK SNAP CONDITION WITH PART 10001102



REV	DESCRIPTION	DATE	APPROVED
E	KPC	10/08/27	BMB

KEY PRODUCT CHARACTERISTICS
H DIMENSION .754 - .834
K DIMENSION .471 - .491
L DIMENSION .285 - .315
M DIMENSION .150 - .180
P SNAP CONDITION

- NOTES:
1. STANDARD STRAIGHTNESS CLASS A AND LENGTH TOLERANCES APPLY.
 2. INTERPRET ALL TOLERANCE APPLICATIONS PER STANDARD.
 3. UNSPECIFIED EXTERNAL RADI = .XXX +.010 / -.005.
 4. UNSPECIFIED INTERNAL RADI = .XXX +.020 / -.005.
 5. UNSPECIFIED EXTERNAL WALL THICKNESS = .XXX +/- .02.
 6. UNSPECIFIED INTERNAL WALL THICKNESS = .XXX +/- .202.

CONFIDENTIAL
UNPUBLISHED WORK © 2010
DECEUNINCK NORTH AMERICA

THIS DOCUMENT CONTAINS PROPRIETARY AND CONFIDENTIAL INFORMATION. DO NOT COPY OR DISSEMINATE THIS INFORMATION WITHOUT THE EXPRESS WRITTEN PERMISSION OF DECEUNINCK NORTH AMERICA. DECEUNINCK NORTH AMERICA RESERVES THE RIGHT TO CHANGE THIS DRAWING AND ANY ASSOCIATED DOCUMENTS.

UNLESS OTHERWISE SPECIFIED DIM ARE IN INCHES
TOL. ON ANGLES: 1°
2 PL: ± 0.010° 3 PL: ± 0.005°
INTERF. DIM AND TOL. PER
ASME Y14.5M - 1994

THIRD ANGLE PROJECTION

DESIGN BY:	PCW
DATE:	06/12/22
DRAWN BY:	JDM
DATE:	07/01/02
ADTH:	DATE:
FILENAME:	DATE:
SHEET NAME:	

deceuninck **ADAPTER**

SASH ADAPTER

10001102 SH

SCALE: 2:1 (BS/FT) .250 SHEET: 1 OF 1

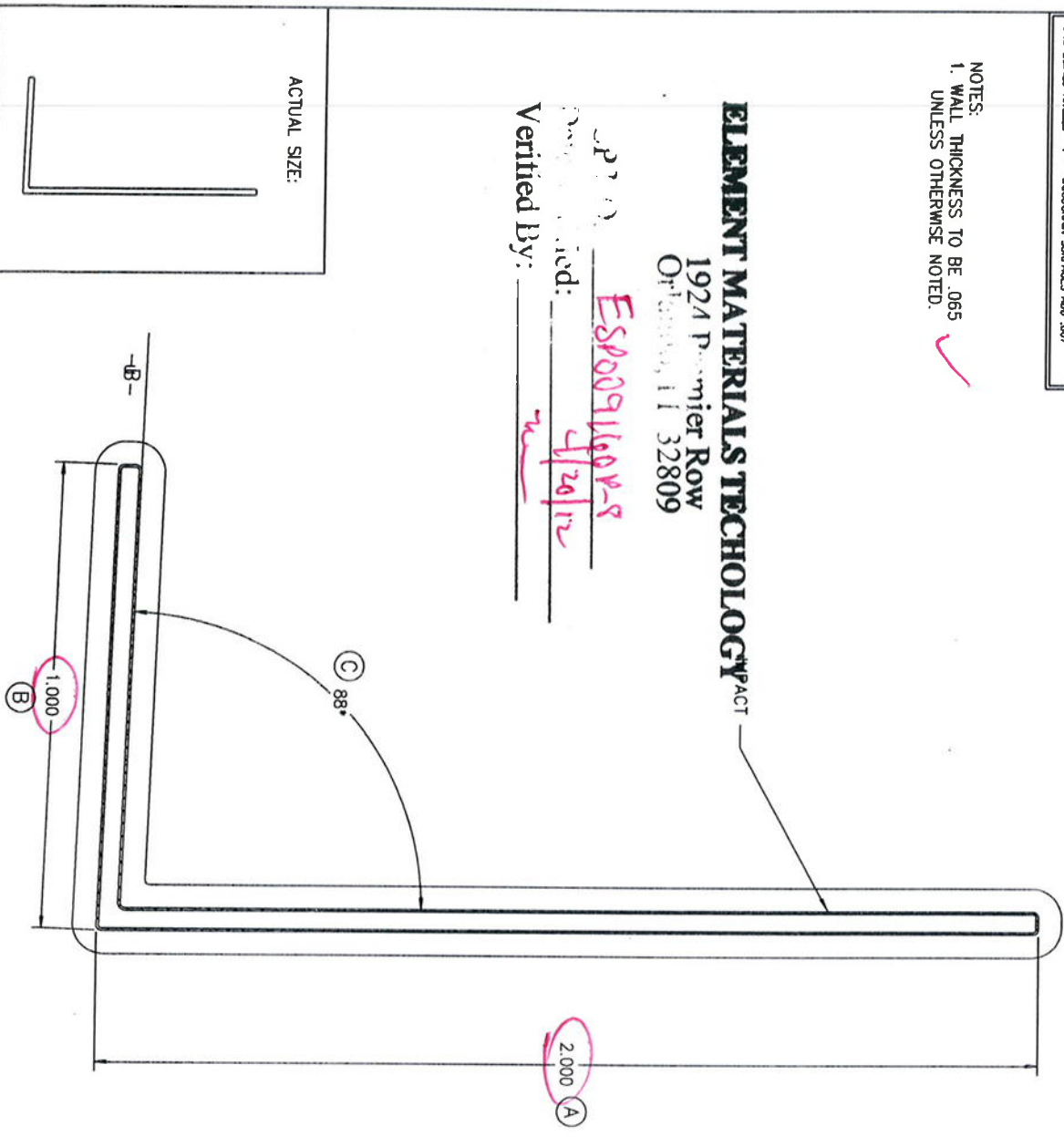
UNLESS OTHERWISE NOTED THE FOLLOWING TOLERANCES APPLY
 .001 - .100 * .005 1.001 - 1.500 * .020
 .101 - .500 * .010 1.501 - 2.000 * .025
 .501 - 1.000 * .015 2.001 - & UP * .030
 UNSPECIFIED ANGLES * 1° - WOODGRAIN SURFACES ADD .007

--- = EXPOSED SURFACE --- = WOODGRAIN SURFACE

NOTES:
 1. WALL THICKNESS TO BE .065 ✓
 UNLESS OTHERWISE NOTED.

ELEMENT MATERIALS TECHNOLOGY^{ACT}
 1924 Premier Row
 Orem, UT 84057

Order # ES0091609-R
 Date 4/29/12
 Verified By: [Signature]



REV	DATE	DESCRIPTION	BY
A	11/15/95	NEW TITLE BLOCK	CRB

CONTROL DIMENSIONS

DIM	METH	MIN	ENG	MAX	DIM	METH	MIN	ENG	MAX
A	C-0	1.970	2.000	2.030	X				
B	C-0	.970	1.000	1.030	Y				
C	OC	85*	88*	91*	Z				
D					AA				
E					BB				
F					CC				
G					DD				
H					EE				
I					FF				
J					GG				
K					HH				
L					II				
M					JJ				
N					KK				
O					LL				
P					MM				
Q					NN				
R					OO				
S					PP				
T					QQ				
U					RR				
V					SS				
W					TT				

Part Wt. (lbs./ft.)	Rigid:	Cap:	Flex:	Alum:	Total
	.041	.019			.060

DAYTON TECHNOLOGIES
 AN ALCOA COMPANY
 Copyright 1995

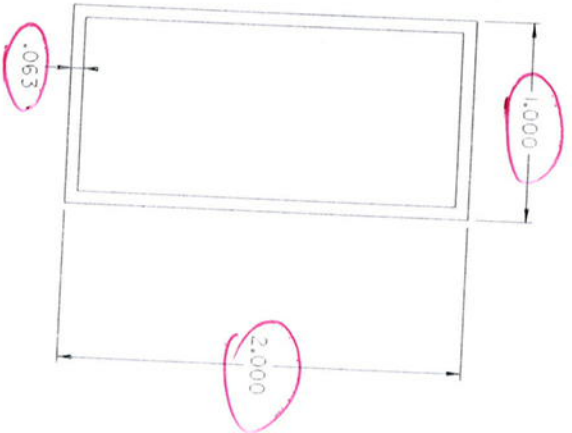
MONROE, OHIO

NAME: _____
 DRAWN BY: MAB DATE: 8/25/87
 CHECKED BY: _____ DATE: _____
 SCALE: 4 : 1 "B"
 PART NO. 5870A PART NAME P5870-A

ALL CHANGES SHALL BE INCORPORATED BY THE DESIGN ACTIVITY.

RIALS TECHNOLOGY
1924 Premier Row
Orlando, FL 32809

BSP NO. ESR009100PS
Date Verified. 4/24/12
Verified By: ca



CONFIDENTIAL

UNPUBLISHED WORK © 2007
DECEUNINCK NORTH AMERICA

THIS DOCUMENT CONTAINS PROPRIETARY AND CONFIDENTIAL INFORMATION. DO NOT COPY OR DISCLOSE THIS INFORMATION WITHOUT THE EXPRESS WRITTEN CONSENT OF DECEUNINCK NORTH AMERICA. DECEUNINCK NORTH AMERICA RESERVES THE RIGHT TO CHANGE THIS DRAWING AND ANY ASSOCIATED DOCUMENTS.

UNLESS OTHERWISE SPECIFIED
DIM ARE IN INCHES
TOL ON ANGLES $\pm 1^\circ$
2 PL: ± 0.010 3 PL: ± 0.005
INTERPRET DIM AND TOL PER
ASME Y14.5M - 1994



THIRD ANGLE PROJECTION

DESIGN BY: JGM

DATE: 11/02/07

DRAWN BY: JGM

DATE: 11/05/09

AUTH: DATE:

AUTH: DATE:

FILENAME: DATE:

113035

deceuninck
NORTH AMERICA

351 NORTH GARVER ROAD
MORHOE, OHIO 45051

NAME: 1" X 2" X 1/16" BOX TUBE

SIZE DWG. NO: A

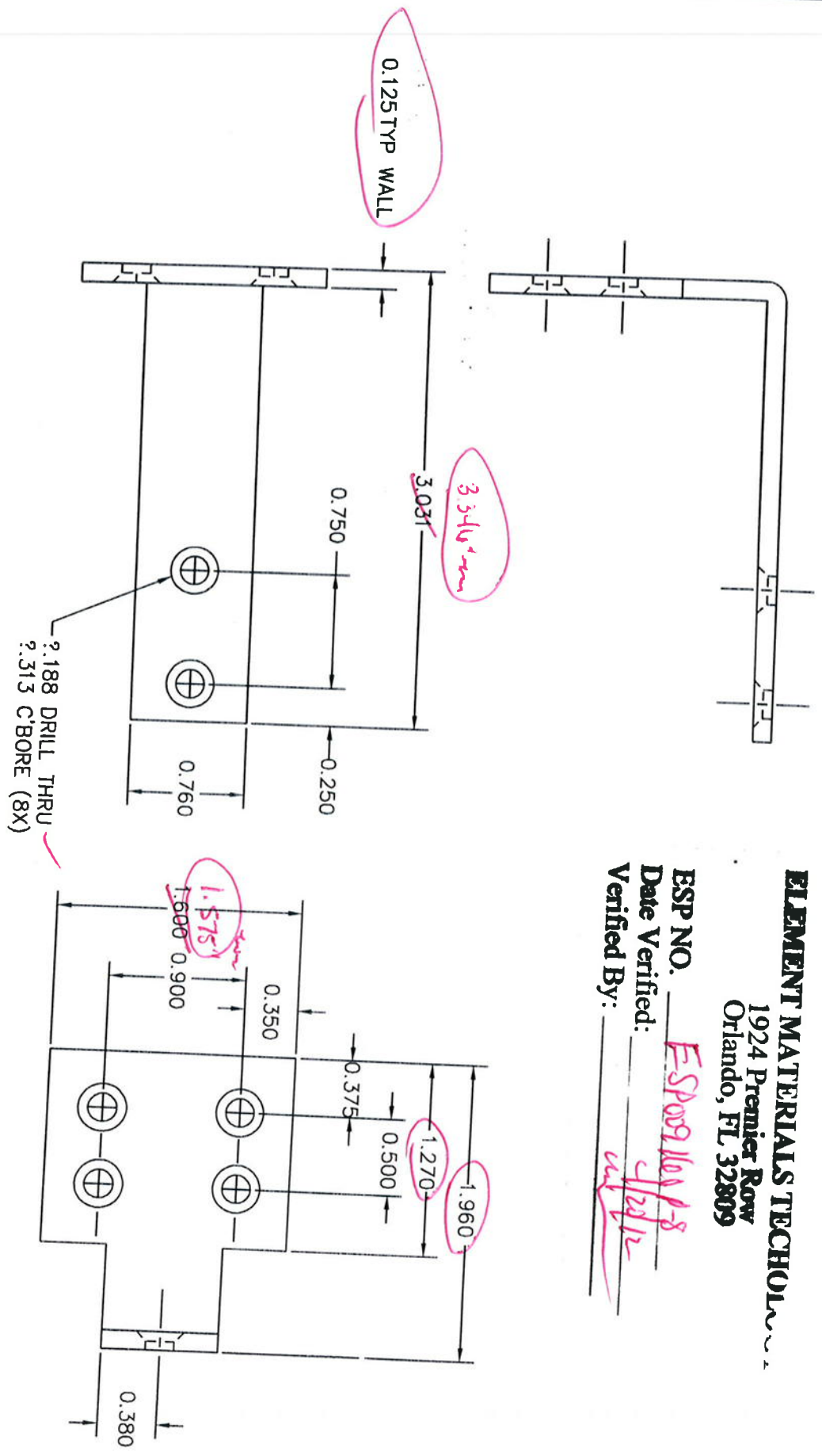
SCALE: 1:1 (LBS/FT.)

SHEET:

REV. NEW

ELEMENT MATERIALS TECHNOLOGY
 1924 Premier Row
 Orlando, FL 32809

ESP NO. ESP009160918
 Date Verified: 11/29/12
 Verified By: WJL



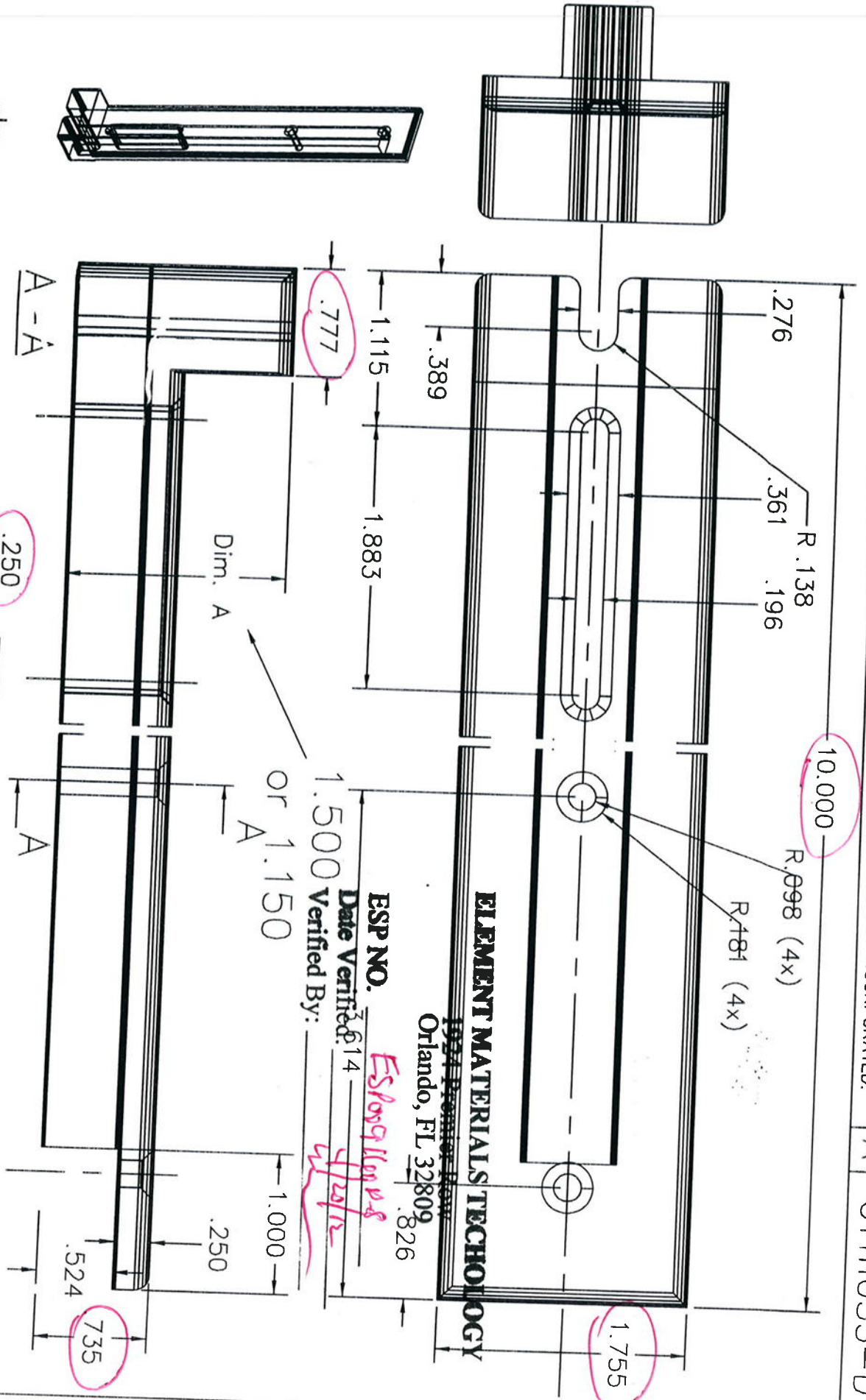
Vinylina®

VINYL BUILDING PRODUCTS INC.

AREA = _____
 WEIGHT = _____

TOLERANCES (EXCEPT AS NOTED)
 ±0.010

REV	BY	APPVD	DATE	CHANGE
DRAWN	MG	DATE	10/29/01	APPVD
BRACKET		MAT'L	6063-T6	SCALE
				1/1
				011H027



COLOR WHITE

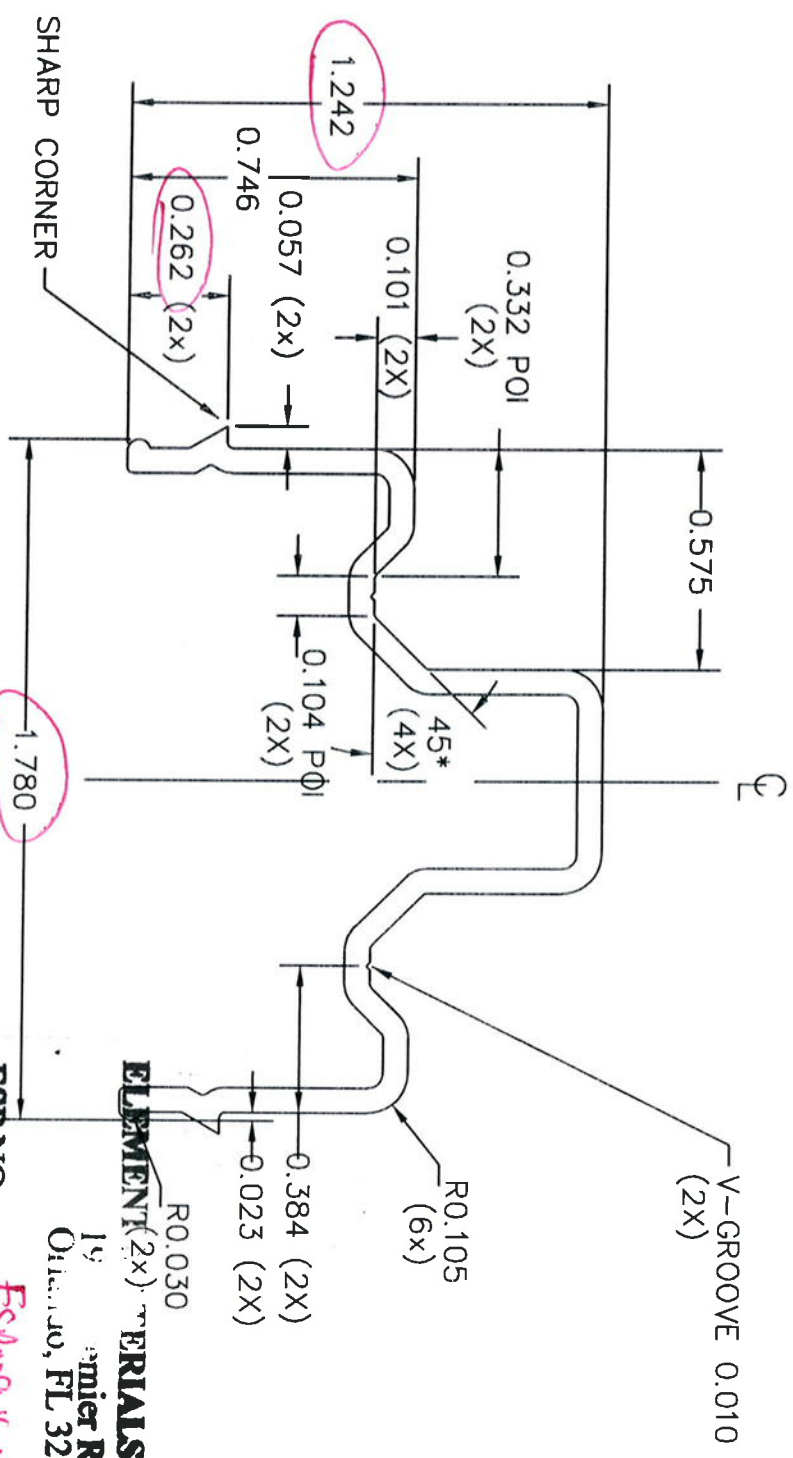
REV	BY	APPVD	DATE	CHANGE

Vinyline
 VINYL BUILDING PRODUCTS INC.
 AREA = 8.109 cub in
 WEIGHT =
 TOLERANCES (EXCEPT AS NOTED)
 ±0.010

DRAWN	MG	DATE	APPVD	MAT'L	SCALE
		2/25/05		NYLON	1/1
BRACKET					
011h055-D					

ESP NO.
 Date Verified: 6/14
 Verified By: *Eslopp/Logos*
 1924 Premier Blvd
 Orlando, FL 32809
 .826

1.500
 or 1.150
 Dim. A

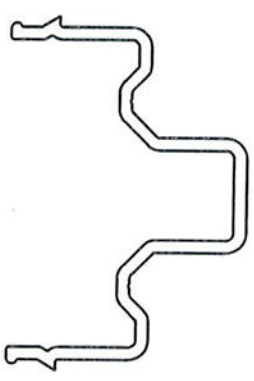


ACTUAL SIZE
NO EXPOSED SURFACES

- NOTES:
1. ALL UNSPECIFIED RADII 0.015.
 2. ALCOA P/N 23111 (WHITE P-001, DESERT SAND P-029).

ESP NO. ESP0916048
 Date Verified: 4/24/12
 Verified By: [Signature]

TERIALS TECHNOLOGY
 19 Premier Row
 Orlando, FL 32809

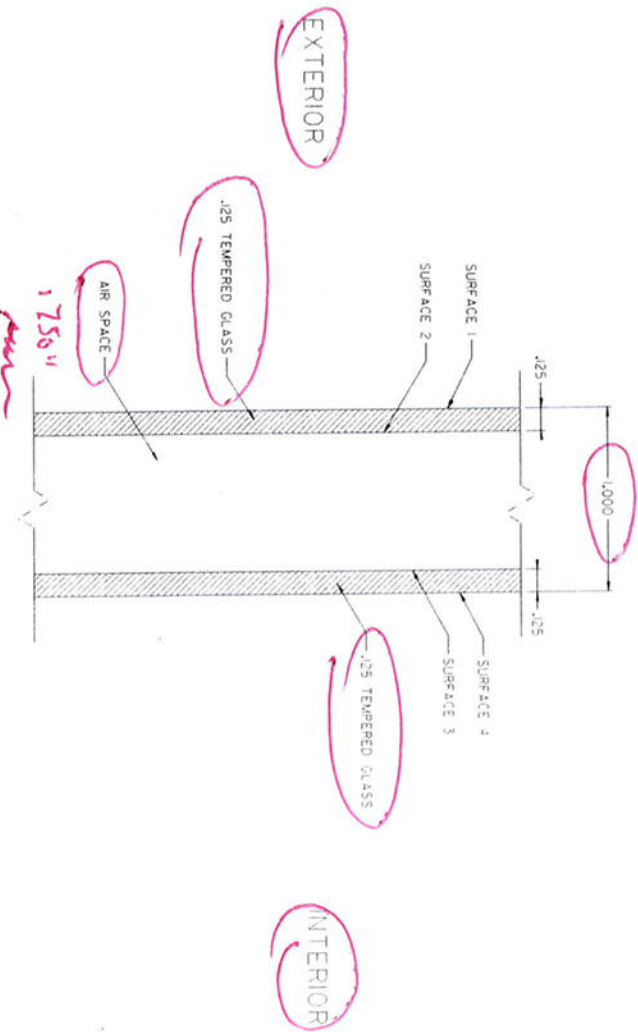


VINYL BUILDING PRODUCTS INC.

AREA = 0.269 sq in
 WEIGHT = 0.316 lb/ft
 TOLERANCES (EXCEPT AS NOTED)
 ±0.010

DRAWN M/G DATE 10/28/3 APPVD
 MATL 6061-T6, 6105-T5 SCALE 2/1

REV	BY	APPVD	DATE	CHANGE
SNUBBER				10300148



ELEMENT MATERIALS TECHNOLOGY
 1924 Premier Row
 Orlando, FL 32809

ESP NO. ESP0091608P-7 A-P-8
 Date Verified: 4/20/12
 Verified By: [Signature]

1" OVERALL LAMINATE IS 1/8" TEMPERED PANELS

CONFIDENTIAL		UNPUBLISHED WORK © 2008 DECLASSIFY NORTH AMERICA	
THE DOCUMENT CONTAINS PROPRIETARY AND CONFIDENTIAL INFORMATION. IT IS TO BE USED ONLY FOR THE PROJECT AND NOT TO BE REPRODUCED OR DISCLOSED IN ANY MANNER WITHOUT THE WRITTEN PERMISSION OF DECEUNINCK NORTH AMERICA. RESERVE THE RIGHT TO CHANGE THE DRAWING AND ANY ASSIGNED CONDITIONS.		DESIGN ORIGINATOR: SPECIFIED 2515 W. OAKWOOD ST. TOLSON, ARIZONA 85129 4806 1/4" SW - 4924	
TWO SINGLE PROJECTIONS		DESIGN SITE: _____ DATE: _____ DRAWN: _____ CHECKED: _____ DATE: _____	
decaunhck NORTH AMERICA 3100 W. OAKWOOD ST. TOLSON, ARIZONA 85129 4806 1/4" SW - 4924		1 1/2" - 0.125" PANELS C DATE: 03/15/12	